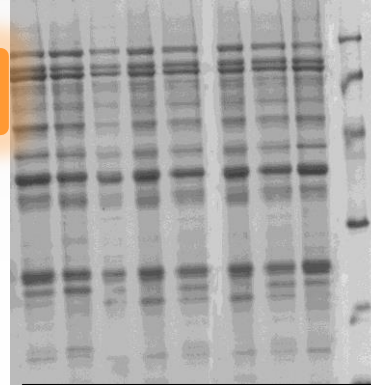


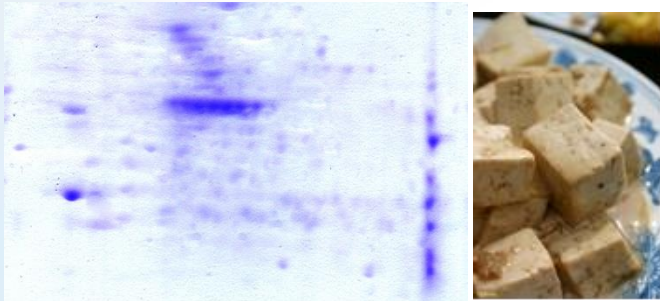
Faculty of Agriculture, University of Belgrade

CURRENT RESEARCH INTEREST

Relationship between crop composition (proteins, oils and carbohydrates) and food quality



SDS profiles of different varieties of soybean



2D gel of soybean variety Novosadjanka

Influence of crop composition on technological, nutritive and functional properties

Changes in composition, nutritive and functional properties of different crop genotypes under storage and processing conditions



Crops under examination: soybean, wheat, quinoa, medicinal plants and spices



Documentation system



RESEARCH FACILITIES



IEF cell



PCR apparatus

Electrophoresis apparatus



HPLC system



Working team:
leader-Prof. Biljana Vucelic Radović
(bvucelic@agrif.bg.ac.rs)
Prof. Mirjana Milovanovic
(mmmilova@agrif.bg.ac.rs)
Prof. Mirjana Demin
(demin@agrif.bg.ac.rs)
Ass. Prof. Sladjana Stanojevic
(sladjas@agrif.bg.ac.rs)
PhD student Milica Pavlicevic
(mpavlicevic@agrif.bg.ac.rs)